

# Palo Alto Networks and Splunk Partnership

## Technology Segment: Security Information & Event Management

The Palo Alto Networks Technology Partner Program includes a select group of partners that deliver solutions or products that interoperate with the next-generation firewall.

### HIGHLIGHTS

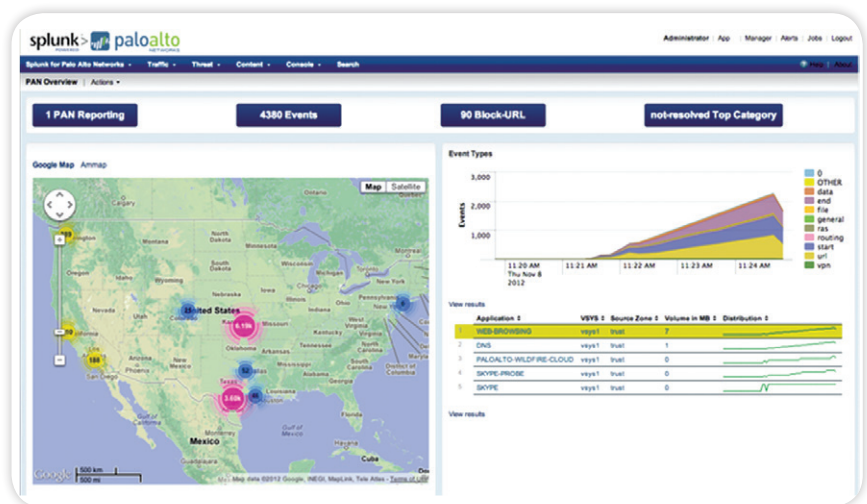
- Leverage applications and users for reporting
- Advanced Security Reporting and Analysis
- Identify threats based on Geography and event type
- Monitor Key performance metrics and configuration changes

### SOLUTION OVERVIEW

In order to stay on top of network activity across their environment, administrators need more than policies. They need information that helps them see the big picture, with the ability to dive into the details for more granularity.

For visibility of security activity across the networking infrastructure, Palo Alto Networks™ has partnered with Splunk® to provide an integrated solution for reporting that incorporates the log data from the next-generation firewall.

Splunk App delivers advanced security reporting and analysis. Security analysts, network administrators and architects can now leverage application and user visibility at an unprecedented scale and rate. Security administrators can drill down into next-generation firewall data in one or two clicks, allowing them to investigate incidents in minutes instead of hours or days. In addition, human resource departments can leverage dashboards and reports in Splunk to track security compliance.



Together, Splunk and Palo Alto Networks provide an integrated solution that makes sense of IT data. The Splunk App for Palo Alto Networks provides pre-defined content with key performance indicators and long-term trending. Splunk software extends Palo Alto's situational awareness capabilities with real-time continuous monitoring and trending. Palo Alto's URL filtering capabilities are enhanced by Splunk's ability to perform long-term trending and provide business-level reports as needed.

**PALO ALTO NETWORKS**

Palo Alto Networks™ (NYSE: PANW) is the network security company. Its innovative platform allows enterprises, service providers, and government entities to secure their networks and safely enable the increasingly complex and rapidly growing number of applications running on their networks. The core of Palo Alto Networks' platform is its Next-Generation Firewall, which delivers application, user, and content visibility and control integrated within the firewall through its proprietary hardware and software architecture. Palo Alto Networks' products and services can address a broad range of network security requirements, from the data center to the network perimeter, as well as the distributed enterprise, which includes branch offices and a growing number of mobile devices. Palo Alto Networks' products are used by more than 9,000 customers in over 100 countries.

[www.paloaltonetworks.com](http://www.paloaltonetworks.com)

**SPLUNK**

Splunk is a flexible IT data engine that records terabytes of machine-to-machine and human-to-machine generated data. This data is the categorical record of user activity and machine and network behavior and contains potential security threats and fraud activity across the enterprise. Splunk can consume and index all your data—on premises or in the cloud—with no schema or custom connectors, making all relevant data available for security investigations. Security incidents can be investigated in minutes instead of hours or days. Using Splunk's extensive search language, investigations can be operationalized across data types, tracked over time, and displayed in custom dashboards with visualizations supporting key security and business metrics all in real-time.

[www.splunk.com](http://www.splunk.com)

For more information, contact [techpartners@paloaltonetworks.com](mailto:techpartners@paloaltonetworks.com)



3300 Olcott Street  
Santa Clara, CA 95054  
Main: +1.408.573.4000  
Sales: +1.866.320.4788  
Support: +1.866.898.9087  
[www.paloaltonetworks.com](http://www.paloaltonetworks.com)

Copyright ©2012, Palo Alto Networks, Inc. All rights reserved. Palo Alto Networks, the Palo Alto Networks Logo, PAN-OS, App-ID and Panorama are trademarks of Palo Alto Networks, Inc. All specifications are subject to change without notice. Palo Alto Networks assumes no responsibility for any inaccuracies in this document or for any obligation to update information in this document. Palo Alto Networks reserves the right to change, modify, transfer, or otherwise revise this publication without notice. PAN\_TPSB\_SPLUNK\_111412